

**FITTINGS AND
ACCESSORIES**

STRAIGHT CONNECTORS

TUBE O.D.	BSPT	PART No.
Ø4mm	1/8" 1/4"	FSC4M2 FSC4M4
Ø6mm	1/8" 1/4" 3/8"	FSC6M2 FSC6M4 FSC6M6
Ø8mm	1/8" 1/4" 3/8"	FSC8M2 FSC8M4 FSC8M6
Ø10mm	1/4" 3/8" 1/2"	FSC10M4 FSC10M6 FSC10M8
Ø12mm	1/4" 3/8" 1/2"	FSC12M4 FSC12M6 FSC12M8



ELBOW CONNECTORS

TUBE O.D.	BSPT	PART No.
Ø4mm	1/8"	FEC4M2
Ø6mm	1/8" 1/4"	FEC6M2 FEC6M4
Ø8mm	1/8" 1/4" 3/8"	FEC8M2 FEC8M4 FEC8M6
Ø10mm	1/4" 3/8" 1/2"	FEC10M4 FEC10M6 FEC10M8
Ø12mm	1/4" 3/8" 1/2"	FEC12M4 FEC12M6 FEC12M8



DOUBLE ENDED CONNECTORS

TUBE O.D.	PART No.
Ø4mm	FDECM44
Ø6mm	FDECM66
Ø8mm	FDECM88
Ø10mm	FDECM1010
Ø12mm	FDECM1212



DOUBLE ENDED ELBOW CONNECTORS

TUBE O.D.	PART No.
Ø4mm	FDEECM44
Ø6mm	FDEECM66
Ø8mm	FDEECM88
Ø10mm	FDEECM1010
Ø12mm	FDEECM1212



EQUAL TEE CONNECTORS

TUBE O.D.	PART No.
Ø4mm	FTPM444
Ø6mm	FTPM666
Ø8mm	FTPM888
Ø10mm	FTPM101010
Ø12mm	FTPM121212



COMPRESSION NUTS & OLIVES

TUBE O.D.	PART No.	
	OLIVE	NUT
Ø4mm	FCM4	FDM4
Ø6mm	FCM6	FDM6
Ø8mm	FCM8	FDM8
Ø10mm	FCM10	FDM10
Ø12mm	FCM12	FDM12



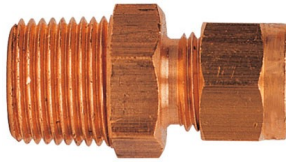
FEMALE CONNECTORS

TUBE O.D.	BSPT	PART No.
Ø4mm	1/8"	FFC4M2
Ø6mm	1/8" 1/4"	FFC6M2 FFC6M4
Ø8mm	1/8"	FFC8M2



CONNECTORS ARE SUPPLIED COMPLETE WITH NUTS AND OLIVES

STRAIGHT CONNECTORS



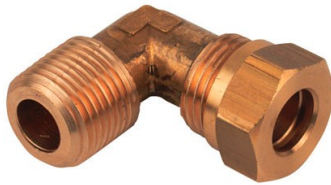
Part No.	ESC 22	ESC 32	ESC 34	ESC 42	ESC 44	ESC 52	ESC 54	ESC 64	ESC 66	ESC 86	ESC 88
BSPT	1/8"	1/8"	1/4"	1/8"	1/4"	1/8"	1/4"	1/4"	3/8"	3/8"	1/2"
Tube Dia.	1/8"	3/16"	3/16"	1/4"	1/4"	5/16"	5/16"	3/8"	3/8"	1/2"	1/2"

COMPRESSION NUTS AND OLIVES



Nut Part No.	ED2	ED3	ED4	ED5	ED6	ED8
Olive Part No.	EC2	EC3	EC4	EC5	EC6	EC8
Tube Dia.	1/8"	3/16"	1/4"	5/16"	3/8"	1/2"

ELBOW CONNECTORS



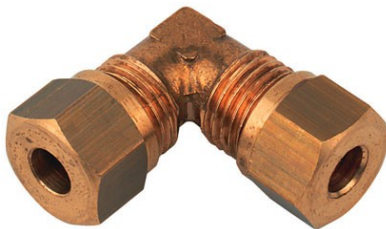
Part No.	EEC 22	EEC 32	EEC 34	EEC 42	EEC 44	EEC 52	EEC 54	EEC 64	EEC 66	EEC 86	EEC 88
BSPT	1/8"	1/8"	1/4"	1/8"	1/4"	1/8"	1/4"	1/4"	3/8"	3/8"	1/2"
Tube Dia.	1/8"	3/16"	3/16"	1/4"	1/4"	5/16"	5/16"	3/8"	3/8"	1/2"	1/2"

DOUBLE ENDED CONNECTORS



Part No.	EDEC 22	EDEC 33	EDEC 44	EDEC 55	EDEC 66	EDEC 88
Tube Dia.	1/8"	3/16"	1/4"	5/16"	3/8"	1/2"

DOUBLE ENDED ELBOW CONNECTORS



Part No.	EDEEC 22	EDEEC 33	EDEEC 44	EDEEC 55	EDEEC 66	EDEEC 88
Tube Dia.	1/8"	3/16"	1/4"	5/16"	3/8"	1/2"

EQUAL TEE CONNECTORS



Part No.	ETP 222	ETP 333	ETP 444	ETP 555	ETP 666	ETP 888
Tube Dia.	1/8"	3/16"	1/4"	5/16"	3/8"	1/2"

FEMALE CONNECTORS



Part No.	ESC 22/F	ESC 32/F
BSPF	1/8"	1/8"
Tube Dia.	1/8"	3/16"

CONNECTORS ARE SUPPLIED COMPLETE WITH NUTS AND OLIVES

NIPPLE-Equal



Part No.	BN22	BN44	BN66	BN88
BSPT	1/8"	1/4"	3/8"	1/2"

NIPPLE-Reducing



Part No.	BN42	BN62	BN64	BN84	BN86	BN126	BN128
BSPT	1/4" to 1/8"	3/8" to 1/8"	3/8" to 1/4"	1/2" to 1/4"	1/2" to 3/8"	3/4" to 3/8"	3/4" to 1/2"

ELBOW-Female



Part No.	BE22	BE44	BE66	BE88
BSP	1/8"	1/4"	3/8"	1/2"

ELBOW-Male/Female



Part No.	BEMF22	BEMF44	BEMF66	BEMF88
BSP	1/8" to 1/8"	1/4" to 1/4"	3/8" to 3/8"	1/2" to 1/2"

TEE PIECE-Female



Part No.	BTP222	BTP444	BTP666	BTP888
BSP	1/8"	1/4"	3/8"	1/2"

TEE PIECE-Male/Female



Part No.	BTPMF222	BTPMF444	BTPMF666	BTPMF888
BSP	1/8" to 1/8"	1/4" to 1/4"	3/8" to 3/8"	1/2" to 1/2"

SOCKET-Equal



Part No.	BS22	BS44	BS66	BS88
BSP	1/8"	1/4"	3/8"	1/2"

SOCKET-Reducing



Part No.	BS42	BS62	BS64	BS84	BS86	BS126	BS128
BSP	1/4" to 1/8"	3/8" to 1/8"	3/8" to 1/4"	1/2" to 1/4"	1/2" to 3/8"	3/4" to 3/8"	3/4" to 1/2"

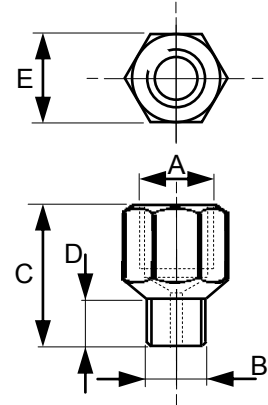
REDUCING BUSH



Part No.	BRB42	BRB62	BRB64	BRB84	BRB86	BRB126	BRB128
BSPT	1/4" to 1/8"	3/8" to 1/8"	3/8" to 1/4"	1/2" to 1/4"	1/2" to 3/8"	3/4" to 3/8"	3/4" to 1/2"

STRAIGHTS (Female Threads for Ø4 Tubing are 5/16" UNF)

PART NO.		THREAD 'A'	THREAD 'B'	SIZES		
BRASS	STEEL			'C'	'D'	'E' A/F
	P2F4S	1/8" BSP	1/4" BSF	0.75"	0.25"	0.50"
P2M5B		1/8" BSP	M5 x 0.80mm	0.75"	0.25"	0.50"
	P2M6S	1/8" BSP	M6 x 1mm	0.75"	0.25"	0.50"
P2M8B		1/8" BSP	M8 x 1mm	0.75"	0.31"	0.50"
	P2UF4S	1/8" BSP	1/4" UNF	0.75"	0.25"	0.50"
P2UF5B		1/8" BSP	5/16" UNF	0.75"	0.31"	0.50"
P4M5B		1/4" BSP	M5 x 0.80mm	0.87"	0.25"	0.62"
P4M6B		1/4" BSP	M6 X 1mm	0.87"	0.25"	0.62"
P4M8B		1/4" BSP	M8 x 1mm	0.87"	0.25"	0.62"
P4M8125B		1/4" BSP	M8 x 1.25mm	0.87"	0.25"	0.62"
P4M10B		1/4" BSP	M10 x 1mm	0.87"	0.25"	0.62"
P4P2B		1/4" BSP	1/8" BSPT	1.06"	0.43"	0.62"
P4UF4B		1/4" BSP	1/4" UNF	0.87"	0.25"	0.62"
	U5FM6S	for Ø4 tubing	M6 x 1mm	0.69"	0.25"	0.40"
UF5M8B		for Ø4 tubing	M8 x 1mm	0.69"	0.25"	0.44"
UF5P2B		for Ø4 tubing	1/8" BSPT	0.69"	0.31"	0.40"
	UF5UF4S	for Ø4 tubing	1/4" UNF	0.69"	0.25"	0.44"
UF5UF5B		for Ø4 tubing	5/16" UNF	0.69"	0.25"	0.44"



90° ELBOWS (Female Threads for Ø4 Tubing are 5/16" UNF)

PART NO.		THREAD 'A'	THREAD 'B'	SIZES			FIG.
BRASS	STEEL			C	D	E	
	P2M6ES	1/8" BSP	M6 x 1mm	0.56"	0.25"	0.56"	G
P2P2EB		1/8" BSP	1/8" BSPT	0.50"	0.31"	0.50"	F
	P2UF4ES	1/8" BSP	1/4" UNF	0.56"	0.25"	0.56"	G
P2UF5EB		1/8" BSP	5/16" UNF	0.56"	0.25"	0.56"	G
P4P4EB		1/4" BSP	1/4" BSP	0.78"	0.44"	0.62"	F
	UF5M6ES	for Ø4 tubing	M6 x 1mm	0.56"	0.25"	0.56"	G
UF5M8EB		for Ø4 tubing	M8 x 1mm	0.56"	0.25"	0.56"	G
UF5P2EB		for Ø4 tubing	1/8" BSPT	0.50"	0.31"	0.50"	F
	UF5UF4ES	for Ø4 tubing	1/4" UNF	0.56"	0.25"	0.56"	G
UF5UF5EB		for Ø4 tubing	5/16" UNF	0.56"	0.25"	0.56"	G

45° STEEL ELBOW CONNECTOR PART No. P2P245B

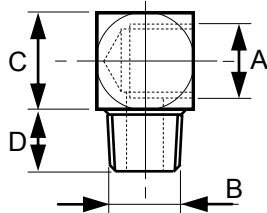
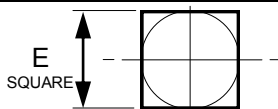
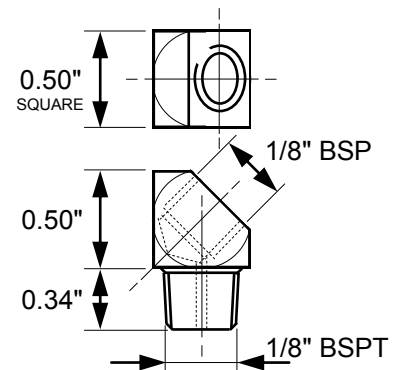


FIGURE 'F'

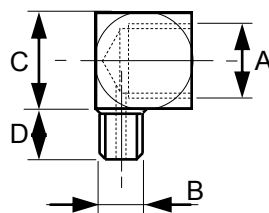
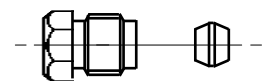


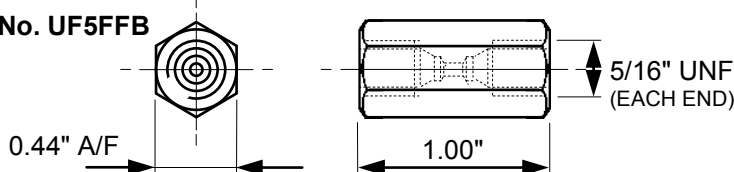
FIGURE 'G'

TUBE NUT AND OLIVE FOR Ø4 TUBING



DOUBLE ENDED BRASS CONNECTOR FOR Ø4 TUBING

PART No. UF5FFB



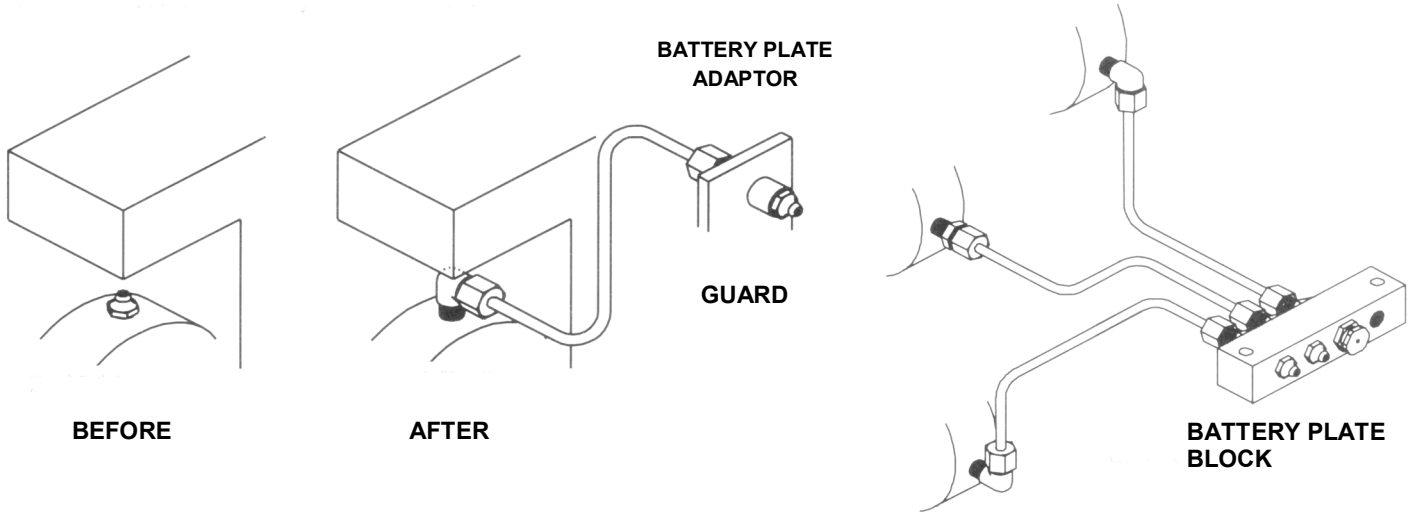
	NUT (STEEL)	OLIVE (BRASS)
PART No.	041020	060020

REMOTE NIPPLE SYSTEM

Allows individual, awkwardly positioned grease nipples or those mounted in dangerous areas to be relocated to an accessible safe position. If a grease nipple is repositioned to the outside of a machine guard this also allows the bearing to be lubricated, safely, whilst the machinery is in operation.

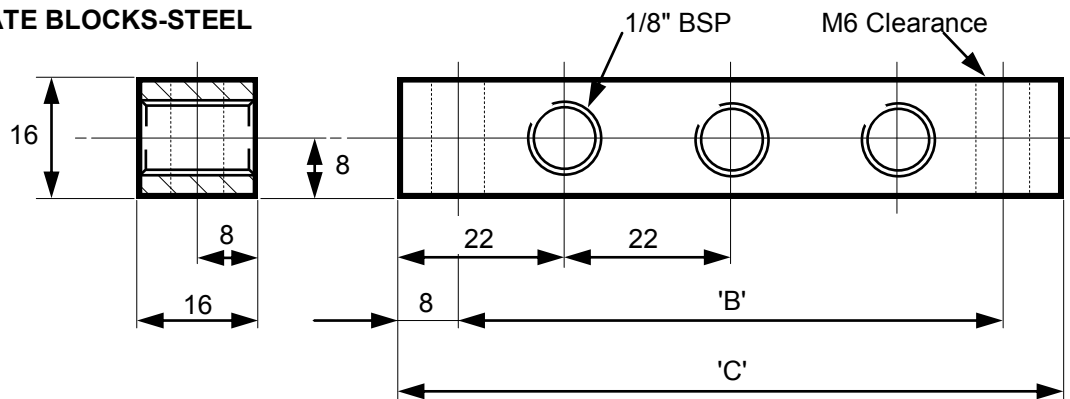
GROUPED NIPPLE SYSTEM

Similar to the remote nipple system but the bearings are piped back to grease nipples mounted at a convenient central location. The grease nipples are mounted in rows on a battery plate block.



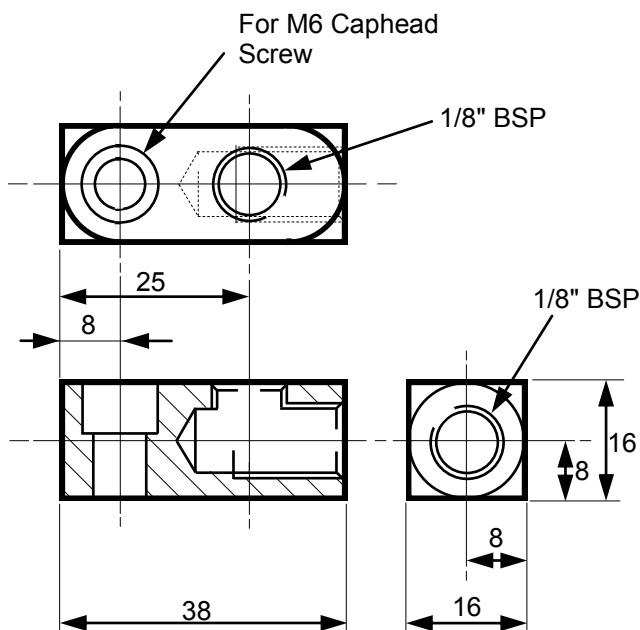
STRAIGHT BATTERY PLATE BLOCKS-STEEL

Part No.	No. of Ways	B	C
*BB01	1	-	33
BB02	2	50	66
BB03	3	72	88
BB04	4	94	110
BB05	5	116	132
BB06	6	138	154
BB08	8	182	198

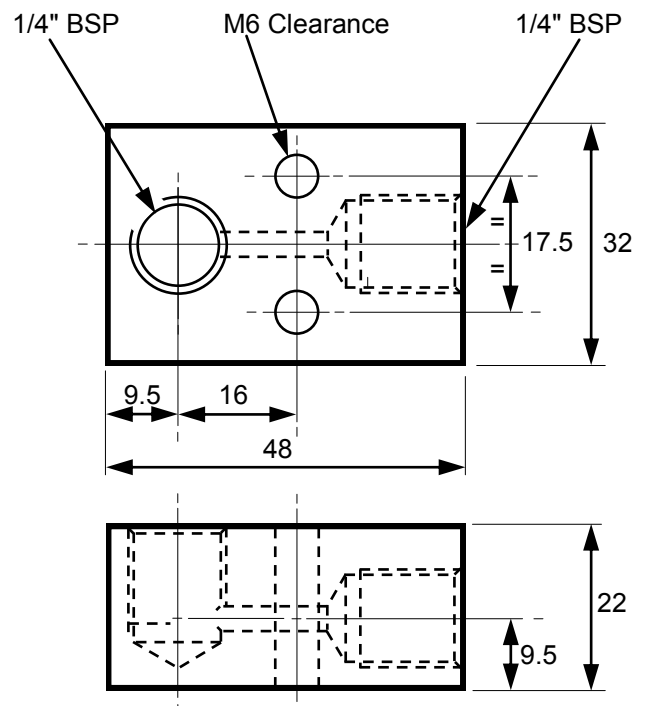


*Single Fixing Hole

SINGLE POINT STEEL ANCHOR BLOCK PART No. AB02



SINGLE POINT STEEL ANCHOR BLOCK PART No. AB04



PRESSURE GAUGES



Range (bars)	Part No.	BSP
0-7	96-2101	1/8"
0-14	96-2102	1/8"
0-70	96-2103	1/4"
0-210	96-2104	1/4"

ROTARY CONNECTORS

(MAXIMUM SPEED 500 rpm.)

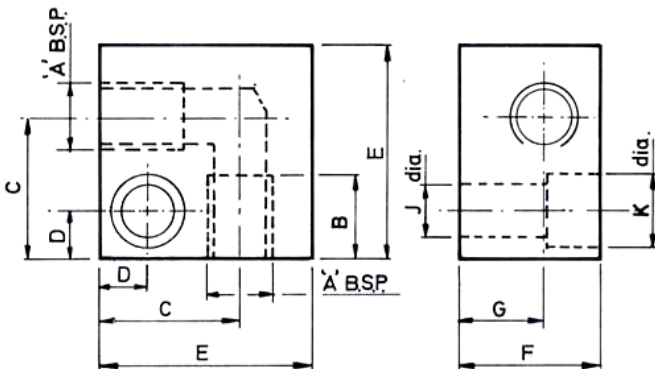


Part No.	Male Thread BSP	Female Thread BSP	L
81-5105	1/8"	1/8"	2.00"
81-5102	1/4"	1/4"	2.25"
81-5104	1/4"	1/8"	2.00"
81-5103	3/8"	1/8"	2.00"
81-5101	3/8"	1/4"	1.94"

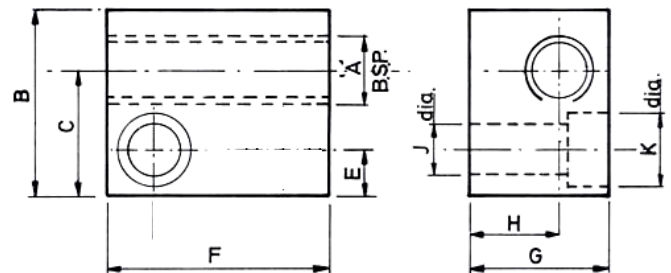
2 WAY 90°

ANCHOR BLOCKS

2 WAY STRAIGHT



Part No.	A	B	C	D	E	F	G	J	K
01-4509	1/8"	8	16	6	25	20	10	5.3	9
01-4510	1/4"	12	23	8	32	25	16	7	11



Part No.	A	B	C	E	F	G	H	J	K
01-4503	1/8"	20	13.5	5.5	30	20	10	5.3	9
01-4504	1/4"	33	22	8	40	25	16	7	11

BSP PLUGS



Part No.	PH2	PH4	PH6	PH8
	1/8"	1/4"	3/8"	1/2"

WASHERS





Part No.	WC2	WC4	WC6	WC8
BSP Size	1/8"	1/4"	3/8"	1/2"

ROTARY CONNECTOR - 168000

For use with oscillating or slow running shafts. Maximum speed 100 rpm.
1/8" BSP Male/Female Threads



GREASE NIPPLES

HARDENED STEEL HYDRAULIC NIPPLES	STRAIGHT	45° ANGLE	90° ANGLE
			
CODE NUMBERS			
1/8" BSP	HP2	HP2/45	HP2/90
1/4" BSP	HP4	HP4/45	HP4/90
3/8" BSP	HP6		
1/8" ANPT	HB2 *	HB2/45	HB2/90
1/4" ANPT	HB4	HB4/45	HB4/90
3/16" dia. drive fit	HDFV3		
1/4" dia. drive fit	HDFV4		
3/16" BSF	HF3		
1/4" BSF	HF4	HF4/45	HF4/90
1/4" BSF long	HF4/L (15/16" O/A)		
5/16" dia. drive fit	HDFV5		
5/16" BSF	HF5	HF5/45	HF5/90
3/8" BSF	HF6		HF6/90
1/4" whitworth	HW4	HW4/45	HW4/90
5/16" whitworth	HW5	HW5/45	HW5/90
1/4" UNF	HUF4 *	HUF4/45	HUF4/90
1/4" UNF long	HUF4/L (15/16" O/A)		
1/4" UNF long	HUF4/LL (29mm O/A)		
5/16" UNF	HUF5	HUF5/45	HUF5/90
3/8" UNF	HUF6	HUF6/45	HUF6/90
M5 x 0.80 mm	HMM5/080	HMM5/080/45	HMM5/080/90
Ø6 mm drive fit	HDFVMM6		
M6 x 0.75 mm	HMM6/075	HMM6/075/45	HMM6/075/90
M6 x 1.00 mm	HMM6/100 *	HMM6/100/45	HMM6/100/90
M6 x 1.00 mm long	HMM6/100L		
Ø8 mm drive fit	HDFVMM8		
M8 x 1.00 mm	HMM8/100 *	HMM8/100/45	HMM8/100/90
M8 x 1.25 mm	HMM8/125	HMM8/125/45	HMM8/125/90
M10 x 1.00 mm	HMM10/100	HMM10/100/45	HMM10/100/90
M10 x 1.50 mm	HMM10/150	HMM10/150/45	HMM10/150/90
M12 x 1.50 mm	HMM12/150		

PUSH-ON NIPPLES		
CODE No.	SIZE	
PP2	1/8" BSP	

CONCAVE NIPPLES		
CODE No.	SIZE	
LP2	1/8" BSP	
LP4	1/4" BSP	
LDFV4	1/4" drive fit	
LDFVMM6	M6 drive fit	
LDFVMM8	M8 drive fit	
LMM6/100	M6 x 1.00 mm	
LMM8/100	M8 x 1.00 mm	
LMM8/125	M8 x 1.25 mm	
LMM10/100	M10 x 1.00 mm	
LMM10/150	M10 x 1.50 mm	

BALL SPRING OILERS		
CODE No.	SIZE	
BO25	5/32" drive fit	
BO3	3/16" drive fit	
BO4	1/4" drive fit	
BO5	5/16" drive fit	
BO6	3/8" drive fit	
BOMM6	6mm drive fit	
BOMM8	8mm drive fit	

*SELF FORMING THREADS: These sizes available with special form thread to screw into plain hole.

STAINLESS STEEL HYDRAULIC NIPPLES	CODE NUMBERS		
	STRAIGHT	45° ANGLE	90° ANGLE
1/8" BSP	SSHP2	SSHP2/45	SSHP2/90
1/4" BSP	SSHP4	SSHP4/45	SSHP4/90
1/8" ANPT	SSHB2	SSHB2/45	SSHB2/90
1/4" ANPT	SSHB4		
3/16" dia. drive fit	SSHDFV3		
1/4" dia. drive fit	SSHDFV4		
1/4" BSF	SSHf4		

STAINLESS STEEL HYDRAULIC NIPPLES	CODE NUMBERS		
	STRAIGHT	45° ANGLE	90° ANGLE
1/4" UNF	SSHUF4	SSHUF4/45	SSHUF4/90
M6 x 1.00 mm	SSHMM6/100	SSHMM6/100/45	SSHMM6/100/90
M8 x 1.00 mm	SSHMM8/100	SSHMM8/100/45	SSHMM8/100/90
M8 x 1.25 mm	SSHMM8/125	SSHMM8/125/45	SSHMM8/125/90
M10 x 1.00 mm	SSHMM10/100	SSHMM10/100/45	SSHMM10/100/90
M10 x 1.50 mm	SSHMM10/150	SSHMM10/150/45	SSHMM10/150/90
M12 x 1.50 mm	SSHMM12/150		

HOOK-ON NIPPLES	STANDARD		INDUSTRIAL	GIANT
	STEEL	BRASS	STEEL	STEEL
IMPERIAL SIZES	CODE NUMBERS			
1/8" BSP	HOP2		HOIP2	
1/8" BSP		HOP2A†		
1/4" BSP	HOP4		HOIP4	GBP4
1/4" BSP		HOP4A†		
1/4" BSF	HOF4			
5/16" BSF	HOF5			
3/8" BSF	HOF6			
3/8" BSP			HOIP6	GBP6
METRIC SIZES				
M6 x 1.00 mm	HOMM6/100			
M8 x 1.00 mm	HOMM8/100			
M8 x 1.25 mm	HOMM8/125			
M10 x 1.00 mm	HOMM10/100			
M10 x 1.50 mm	HOMM10/150			
M16 x 1.50 mm				GBMM16/150
STAINLESS STEEL HOOK-ON NIPPLES				
1/8" BSP	SSHOP2			
1/4" BSP	SSHOP4			

† Bronze Ball and Spring

EXTENSION PIECES	
CODE No.	SIZE HEXAGONAL
CE21/HEX	1/8" BSP x 1/2"
CE22/HEX	1/8" BSP x 1"

BATTERY PLATE ADAPTORS			
CODE No.	TUBE O/D	DIMENSIONS (mm)	
		MAXIMUM PLATE THICKNESS	CLEAR. HOLE
BPA3/1	3/16"	10	10
BPA3/2	3/16"	12	10
BPA4/1	1/4"	12	11.5
BPA4/2	1/4"	19	11.5
BPA6/1	3/8"	10	15
BPA6M/1	6mm	12	11.5
BPA6M/2	6mm	19	11.5
BPA10M/1	10mm	10	15

"NIPCAP" PLASTIC COVERS FOR HYDRAULIC NIPPLES			
	COLOUR	CODE NUMBER	
		PLAIN	WITH COLLAR
	RED	NCP/R	NCP/RC/R
	YELLOW	NCP/Y	NCP/RC/Y
	GREEN	-	NCP/RC/G
	BLUE	-	NCP/RC/BU
BLACK	-	NCP/RC/B	

PLASTIC IDENTIFICATION WASHERS		
TO SUIT THREAD SIZE	CODE NUMBER	
	RED	YELLOW
1/8" BSP	PWP2R	PWP2Y
1/4" BSP	PWP4R	PWP4Y
1/4" BSF	PWF4R	PWF4Y

SCREW DOWN LUBRICATORS								
		CODE No.	CAPACITY cc	THREAD 'A'	Ø'B'	'C' MAX	'D'	'E'
		GCR21	7	1/8" BSP	25mm	48mm	10mm	17mm
		GCR22	7	1/4" BSP	25mm	48mm	10mm	17mm
		GCR31	14	1/8" BSP	34mm	52mm	10mm	17mm
		GCR32	14	1/4" BSP	34mm	52mm	10mm	17mm
		GCR41	30	1/8" BSP	40mm	55mm	10mm	17mm
		GCR42	30	1/4" BSP	40mm	55mm	10mm	17mm
		GCR62	88	1/4" BSP	60mm	66mm	10mm	17mm

NYLON TUBING

To BS 5409 Parts 1 or 2

Nylon tubing is manufactured in flexible and semi-rigid grades of heat and light stabilised polyamide types 11 or 12. It is made to close dimensional tolerances, thus ensuring confident use of compression and push-in fittings for a variety of applications. Main uses include pneumatic controls and systems, instrumentation, lubrication and fuel lines.

Supplied in 30 metre coils.

FLEXIBLE. COLOUR: NATURAL
 Max. working temperature: +70°C (Occasional use up to +120°C)
 Min. working temperature: -35°C

Inch O.D. Sizes	Cat. No.	I.D.	Gauge	Burst Pressure Bar at 20°C
1/8"	TNF2M	.058"	Medium	173
3/16"	TNF3M	.117"	Medium	125
1/4"	TNF4M	.170"	Medium	93
5/16"	TNF5M	.212"	Medium	65
3/8"	TNF6M	.250"	Medium	93
1/2"	TNF8M	.375"	Medium	69
4mm	TNFM4M	2.5mm	-	100
6mm	TNFM6M	4.0mm	-	90
8mm	TNFM8M	5.5mm	-	84
10mm	TNFM10M	7.0mm	-	79
12mm	TNFM12M	9.0mm	-	61

SEMI-RIGID. COLOUR: BLACK
 Max. working temperature: +110°C (Occasional use up to +140°C)
 Min. working temperature: -35°C

Inch O.D. Sizes	Cat. No.	I.D.	Gauge	Burst Pressure Bar at 20°C
1/8"	TNSR2H	.075"	Heavy	208
3/16"	TNSR3H	.117"	Medium	195
1/4"	TNSR4H	.170"	Medium	173
5/16"	TNSR5H	.212"	Medium	178
3/8"	TNSR6H	.250"	Medium	188
1/2"	TNSR8H	.406"	Medium	90
4mm	TNSR4MH	2.5 mm	-	216
6mm	TNSR6MH	4.0 mm	-	173
6mm	TNSR6MH3	3.0 mm	-	266
8mm	TNSR8MH	6.0 mm	-	122
10mm	TNSR10MH	7.0 mm	-	164
12mm	TNSR12MH	10.0 mm	-	79

N.B. increases in temperature above +20°C will result in a decline in pressure values.

BUNDY TUBE

Tubing is constructed from copper coated steel strip which is rolled twice around laterally, then furnace brazed to produce a tube of double wall structure, with a clear, scale free coppered bore, a zinc and yellow passivated surface and a consistently uniform wall thickness.

Supplied in *10 ft or **3 metre lengths.

*Inch O.D. Sizes	Cat. No.	Burst Pressure Bar
3/16"	TB3	1100
1/4"	TB4	800
5/16"	TB5	725
†3/8"	TB6	545
†Single Wall		
**Metric O.D. Sizes	Cat. No.	Burst Pressure Bar
4mm	TBM4	1100
6mm	TBM6	900
8mm	TBM8	725
10mm	TBM10	500



BRASS INSERTS

Tube o.d. Size	Cat. No.
5/32" or 4 mm	BIM4
3/16"	BI3
1/4"	BI4
6 mm	BIM6

PIPE CLIPS

Use self - tapping screws ref: STD212/9



Tube o.d. Size	Cat. No.	No. of Ways
5/32" or 4 mm	PC251	1
	PC252	2
	PC253	3
3/16" or 5 mm	PC31	1
	PC32	2
	PC33	3
1/4" or 6 mm	PC41	1
	PC42	2
	PC43	3
5/16" or 8 mm	PC51	1
	PC52	2
	PC53	3
3/8" or 10 mm	PC61	1
	PC62	2
	PC63	3
1/2" or 12 mm	PC81	1
	PC82	2
	PC83	3

COPPER TUBE

Specification: BS.2871/2/1972/C106. Condition "O"
 Supplied soft annealed in 10 metre coils in clear sealed plastic bags.



Inch O.D. Sizes	Cat. No.	Gauge	Burst Press. P.S.I.
3/16"	TSAC322	22 swg	10900
1/4"	TSAC422	22 swg	7900
5/16"	TSAC522	22 swg	6170
3/8"	TSAC622	22 swg	5060
1/2"	TSAC820	20 swg	4700
Metric O.D. Sizes	Cat. No.	Wall	Burst Press. P.S.I.
4mm	TSAC4M06	0.6mm	11000
6mm	TSAC6M08	0.8mm	9600
8mm	TSAC8M08	0.8mm	6970
10mm	TSAC10M08	0.8mm	5450
12mm	TSAC12M08	0.8mm	4480

APPLICATIONS

Medium pressure lubrication and hydraulic lines.

TEMPERATURE RANGE

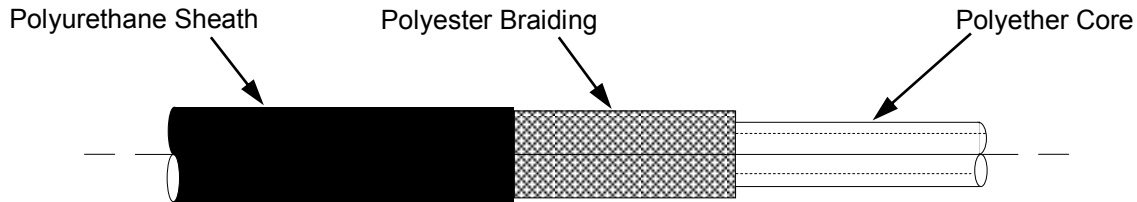
Under continuous use a range of -30°C to +80°C is acceptable.

BETTER ABRASION RESISTANCE

The hose covering has greater resistance to abrasion than the rubber covering of wire braided hose.

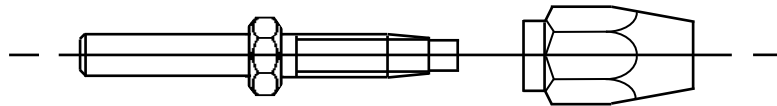
CONSTRUCTION

The hose is manufactured with a polyether core covered with polyester braiding and covered with a tough polyurethane outer sheath.



CATALOGUE NUMBER	HOSE DIAMETER (mm)		WORKING PRESSURE (BAR) AT 20°C	MINIMUM BEND RADIUS (mm) AT 20°C
	INTERNAL	EXTERNAL		
50-4862	4	8.6	200	20

END FITTINGS



STANDPIPE END AND FERRULE

Type	Part No.
1/8" Female Swivel c/w Ferrule	50-0204
4mm Standpipe c/w Ferrule	50-0404
6mm Standpipe c/w Ferrule	50-0604
45°- 6mm Standpipe c/w Ferrule	50-0645
90°- 6mm Standpipe c/w Ferrule	50-0690

ASSEMBLY INSTRUCTIONS

1. Cut the hose cleanly using a sharp knife. Do not use a hacksaw.
2. Clamp the hose, apply a suitable lubricant and screw on the ferrule. (left hand thread).
3. Hold the ferrule in a smooth jawed vice, lubricate the insert and screw fully home (right hand thread).

STEEL COMPRESSION FITTINGS - METRIC AND IMPERIAL THREADS

STRAIGHT CONNECTORS

TUBE O.D.	MALE THREAD	PART No.
Ø4mm	M6 x 1	HSC4MM6
	M8 x 1	HSC4MM8
	M10 x 1	HSC4MM10
Ø6mm	M6 x 1	HSC6MM6
	M8 x 1	HSC6MM8
	M10 x 1	HSC6MM10
	1/8" BSP	HSC6M2



ELBOW CONNECTORS

TUBE O.D.	MALE THREAD	PART No.
Ø4mm	M6 x 1	HEC4MM6
	M8 x 1	HEC4MM8
	M10 x 1	HEC4MM10
Ø6mm	M6 x 1	HEC6MM6
	M8 x 1	HEC6MM8
	M10 x 1	HEC6MM10
	1/8" BSP	HEC6M2



DOUBLE ENDED CONNECTORS

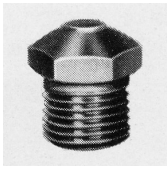
TUBE O.D.	PART No.
Ø4mm	HDECM44
Ø6mm	HDECM66



COMPRESSION NUTS AND OLIVES

TUBE O.D.	PART No.	
	OLIVE	NUT
Ø4mm	HCM4	HDM4
Ø6mm	HCM6	HDM6

RELIEF VALVES

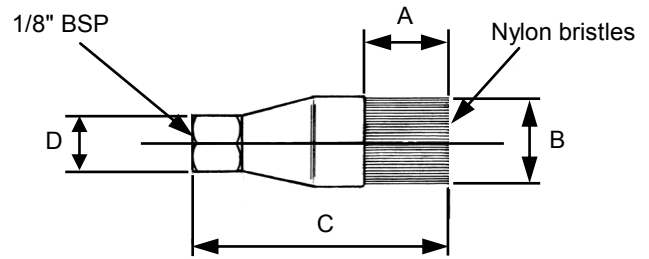


A small spring operated relief valve of brass construction for use primarily with oil.

Dimensions: 0.455" Hex. A/F
1/2" long (approx.)

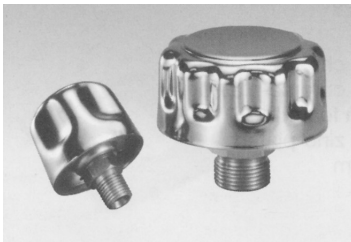
Part No.	Thread	Release Pressure
RV1	1/8" BSP	Between 45 and 80 lbs. p.s.i.
RV3		Between 8 and 15 lbs. p.s.i.
RV5		Between 1 and 5 lbs. p.s.i.

DRIP FEED OIL BRUSHES



Part No.	A	B	C	D A/F
FNB20	20	20	57	13
FNB30	27	30	65	17

FILTER BREATHERS



Constructed from chrome plated steel with a 10 micron foam (PUR) air filter.

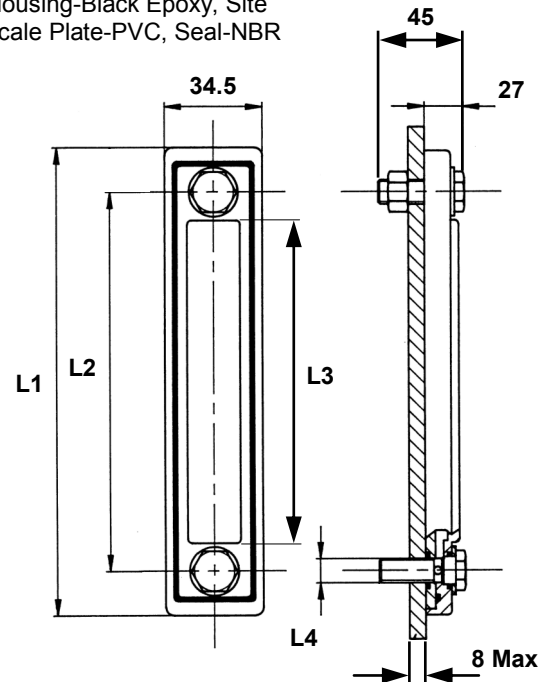
For the ventilation of gearboxes, tanks and other sealed mechanisms.

Part No.	Dimensions	Max. Rate of Air Flow
SFB04	Thread: 1/4" BSP Cap: Ø47mm x 42.5 High Hex. Nut (A/F): 17mm	0.4 m³/min
SFB06	Thread: 3/8" BSP Cap: Ø47mm x 42.5 High Hex. Nut (A/F): 19mm	0.4 m³/min
SFB08	Thread: 1/2" BSP Cap: Ø47mm x 42.5 High Hex. Nut (A/F): 22mm	0.4 m³/min
SFB12	Thread: 3/4" BSP Cap: Ø80mm x 51.0 High Hex. Nut (A/F): 32mm	1.0 m³/min

For visual level indication in reservoirs.
Temperature Range: -20°C to + 80°C
Tank Pressure 1 bar max.

Materials: Housing-Black Epoxy, Site Tube-PA, Scale Plate-PVC, Seal-NBR

TANK GAUGES



Part No.	L1	L2	L3	L4
TLG76	108	76	31	M10
TLG127	159	127	76	M12
TLG176	208	176	124	M12
TLG254	285	254	192	M12

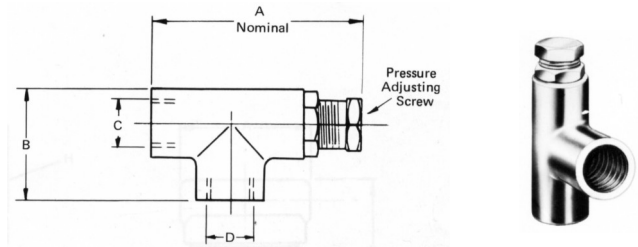
FLOW INDICATORS

Yellow spinner rotates inside glass dome to indicate flow.
Bronze or stainless steel body.
Sizes from 1/4" to 1" BSP.
Maximum temperature 200°C.
Maximum pressure 16 bar.
Bi-directional flow.
Suitable for horizontal and vertical installations.



Over Pressure Relief Valves

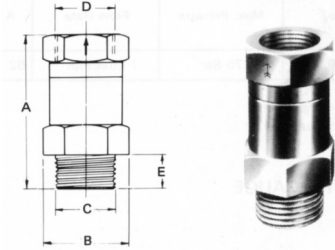
Part No.	Pressure Range	A nominal	B	C & D
RV10036	0 - 1 bar	57	33	1/4" BSP
RV10037	0.7 - 8 bar	76	41	3/8" BSP



Non Return Valve

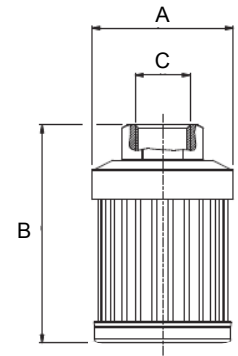
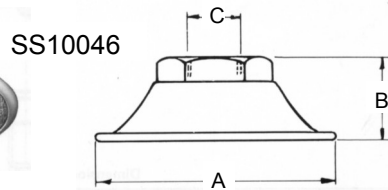
Part No.	A	B A/F	C	D	E
NRV10038	43	20.8	3/8" BSP	3/8" BSP	9.5

This non return valve should be fitted vertically into the oil strainer and connected to the pump inlet by a suction pipe. Brass bodied, the valve is fitted with a stainless steel ball.



Suction Oil Strainers

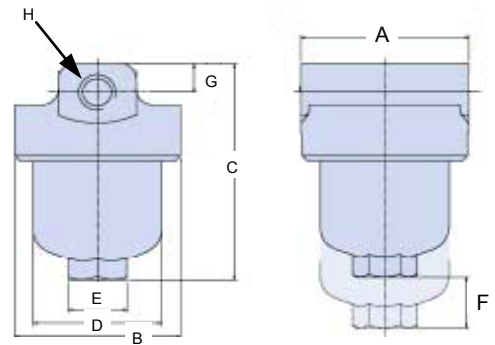
Part No.	A	B	C	Filter
SS10046	77	32	3/8" BSP	40 Mesh
SS30125	54	84	1/2" BSP	125 Micron



Oil Filters - no by-pass

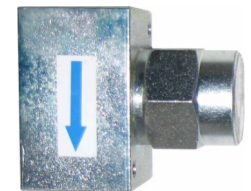
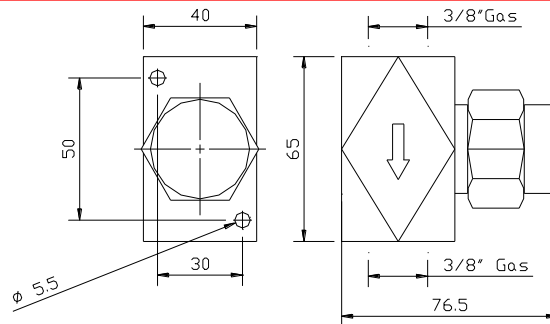
Part No.	Max. Working Press. (Bar)	Flow Rate (l/min.)	A	B	C	D	E (A/F)	F	G	H (BSP)	Filter (Micron)
OF1719	280	7	63	62	82	48	22	19	11	1/4"	25
†OF2802	200	50	75	82	157	58	22	30	28	1/2"	60

† For version with visual indicator add suffix V, for version with electrical indicator add suffix E.



Grease Line Filters

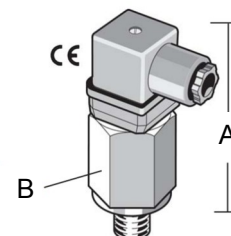
Part No.	Max. Working Press. (Bar)	Filter (Micron)
GF2612	500	150
GF2613	500	300



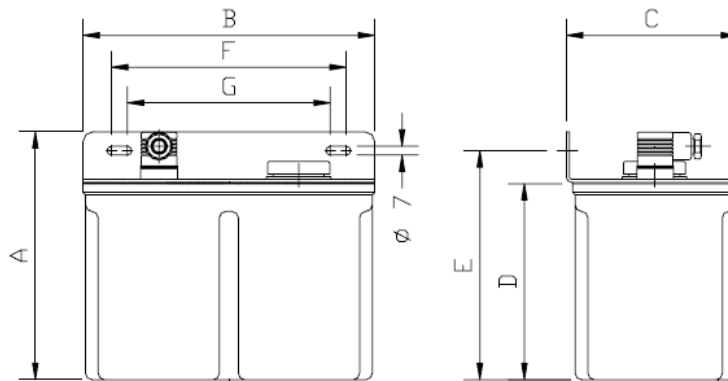
Pressure Switch - with Din Plug to IP65

Part No.	Adjustment Range (bar)	A	B	Thread
PSM10	1-10	73	27 A/F	1/4" BSP
PSM50	10-50			

Switch electrical rating: 250 volts AC/6A (res) 2A (ind) N.O.
Protection: IP65 (Pg9 gland standard)

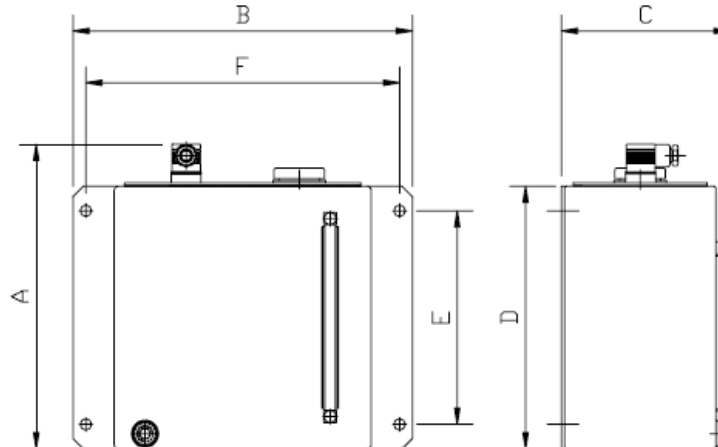


NYLON RESERVOIRS COMPLETE WITH COVER, FILLER CAP, STRAINER & OPTIONAL LOW LEVEL SWITCH.



Part No.	Capacity	Low Level	A	B	C	D	E	F	G
006480	1 Litre	No	149	148	123	108	134	132	125
006481	2 Litre	No	201	148	123	160	186	132	125
006482	4 Litre	No	196	230	135	155	181	185	160
006483	6 Litre	No	291	230	135	250	276	185	160
006484	1 Litre	Yes	149	148	123	108	134	132	125
006485	2 Litre	Yes	201	148	123	160	186	132	125
006486	4 Litre	Yes	196	230	135	155	181	185	160
006487	6 Litre	Yes	291	230	135	250	276	185	160

METAL RESERVOIRS COMPLETE WITH COVER, FILLER CAP, STRAINER & OPTIONAL LOW LEVEL SWITCH.



Part No.	Capacity	Low Level	A	B	C	D	E	F
006490	5 Litre	No	197	236	151	156	-	185
006491	8 Litre	No	270	330	163	252	205	305
006492	12 Litre	No	270	355	196	252	205	330
006493	50 Litre	No	417	560	266	400	300	530
006494	5 Litre	Yes	197	236	151	156	-	185
006495	8 Litre	Yes	293	330	163	252	205	305
006496	12 Litre	Yes	293	355	196	252	205	330
006497	50 Litre	Yes	440	560	266	400	300	530

LOW LEVEL: - Electrical: 250V AC - 150V DC 1.5A max. Contact: Normally Closed. Temperature Range: 0°C to 70°C. Rating: IP-65